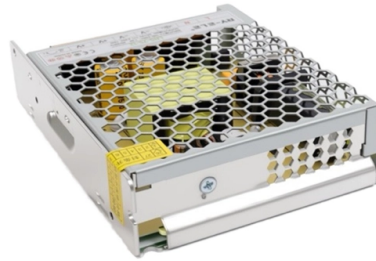


## Dimensions of a 20HP Circuit Breaker Distribution Box



### Overview

Galvanized steel with removable endwalls, one is provided with knockouts and the other is blank. (146 mm) deep, 600 A main lug interior max. Load Center Specifications 11 Box Wrapper Specifications 13 Ease of Installation Features 14 BAHRA MCB as per IEC Standard Features 16 Range 18 BAHRA Branch Breaker specification 22 BAHRA (MCCB) Breaker specifications (IEC) 24 Features 29 Specifications 31 Range 33 BAHRA promises to continue. ABB Mini Center Compact distribution board is the basis for development and growth in meeting all the demands for a successful future in residential, commercial, and infrastructure segments. The wide range of distribution boards enables each customer to select an individual and economical. distribution technology. Engineered specifically to provide maximum flexibility, the new designs simplify wiring and reduce material requirements making them easier to install and less costly than competitive. Eaton's power distribution systems are designed to be as compact and energy efficient as possible while easy access for installation, operation and maintenance. Provide panel schedule for quotation. Higher amperage models available.

## Article Content

### Distribution Board, Enclosure System & Electrical Products

For project pricing and drawings for construction approval, we are able to help provide a solution for your distribution board requirements. A comprehensive selectivity and discrimination software package is

### Distribution Boxes Types - The Complete Guide

The power distribution boxes deliver electricity from the main electrical main to other circuits. Several distribution boxes are designed for specific use in

Size configuration of multiple circuit breakers in the

Choose the right size and setup for multiple circuit breakers in your distribution box to ensure safety, code compliance, and room for future upgrades.

### Eaton XBoard Distribution Box

Eaton's range of power distribution assemblies not only provides you optimum power distribution and motor control functionalities, they meet your most demanding requirements for safety and flexibility.

### Circuit Breaker Distribution Panel

Circuit Breaker Distribution Panel The DST is a high density Rackmount Distribution Panel designed to accommodate virtually any 48 VDC, 24 VDC or 12 VDC power distribution requirement. Its flexibility

### Understanding Distribution Boxes: A Comprehensive Guide

A distribution box, also known as a power distribution box or electrical distribution box, is used to distribute electrical power safely to multiple

### Distribution Boards

Easy Installation of outgoing The design of the pan assembly facilitates the installation of outgoing devices. Availability of mixing Mixing two different types of outgoing devices can be provided in

### Distribution Boards & Consumer Units

Clear detailed description of each size and easy to select with the ordering codes. Box with four studs and adjustable nuts for easy fit / easy remove of pan assembly. Generous wiring space. Easy fit of

### Electrical Distribution Box Design Guide

The document provides details for designing the electrical distribution box and circuits for a residence. It includes specifications for the main circuit breaker such

## Breaker Box Diagram and Wiring Guide

A detailed diagram of a breaker box, showing its components and how they function to protect electrical systems from overloads and faults.

### ABB molded case circuit breakers

The power distribution circuit breakers are available, with UL 489 and CSA C22.2 approval, in the fixed, plug-in or draw out, two-pole, three-pole and four-pole versions.

### Distribution Boards

Distribution Boards - 12 & 20 Way Ordering Information ... Circuit Breaker Selection Chart QFL SPD (Surge Protective Device)

### DISTRIBUTION BOARDS CATALOG

For ampere trip ratings for breaker; refer to table (8 and 9). The below table indicates the features along with the dimensions.

### How to Size Main Panel, Load Center, and Consumer

These terms—load center, panelboard, distribution board, or consumer unit—are often used interchangeably. In short, a panelboard or distribution board is a

### Enclosures

20 in. (508 mm) wide x 8.75 in. (223 mm) deep, for PowerPacT L main circuit breaker interior. Enclosure and interior mounting instructions are found in the information manual shipped with the interior.

### Outdoor Electrical Distribution Box Specifications: NEC

Distribution Box vs Junction Box vs Load Center Critical Specification Difference: Distribution boxes have field-installable circuit breakers with bolted

### Electrical Control Panels & Distribution Boxes: Sizes,

This guide explores control panels, electrical boxes, breaker panels, bus bars, junction boxes, and custom enclosures to help you understand their

### 20 Space Indoor Breaker Box with 100A Main Circuit

Indoor Load Center with 100A Main Circuit Breaker Factory Installed, 20 Spaces, NEMA 1 Rated. Includes Enclosure and Interior Only. Door Sold

### POWER PRODUCT Panelboards

Main Breaker Gutter Dimensions - Inches Feed-thru lug wire bending space is 15.000" (381mm) and neutral wire bending space is 15.880" (413mm) on 400A panel.

### 3-Phase Loadcenter Program

Commercial Loadcenter Unit Enclosures—Box Sizes Approximate Dimensions in Inches (mm) Residential Loadcenter Knockouts Knockouts for Box Sizes C4, D1, G1, L1, L2, C1R, C3R, D1R, G1R,

Control panel design guide according UL 508A

Main disconnect switches (Circuit Breakers and Molded Case Switches) equipped with door mounted rotary handles, and installed in industrial control panels for industrial machinery applications,

#### DISTRIBUTION BOARDS CATALOG

BAHRA Load Centers are used for safe and reliable distribution of electrical power for indoor application in residential and commercial buildings. BAHRA Load Centers are powered by the best selection of

Distribution Board, Enclosure System & Electrical Products

The Eureka Distribution Board is available from 18 to 96 poles in IP42 or IP56, in N42 (Grey) or X15 (Orange). With 600mm standard width and a depth of 230mm, accessories can be easily fitted and

Circuit Breaker Distribution Panel

Premium Electric electricians on how your circuit breaker distribution panel works, an easy-to follow guide for beginners.

EATON SPECS web dd

Suitable for use as service entrance equipment Load centers and meter breaker combinations accept Cutler Hammer type CH, BR type plug on type circuit breakers Panel boards are made to order.

## Contact Us

For more information, pricing, or custom solutions, please contact us:

Website: <https://www.blazingfast.co.za>

Email: [info@blazingfast.co.za](mailto:info@blazingfast.co.za)

Phone: +27 83 416 7295

Address: Plot 45, Silicon Savannah Road, Tatu City, Kiambu 00900, Kenya

This document is for informational purposes only. Specifications subject to change without notice.

