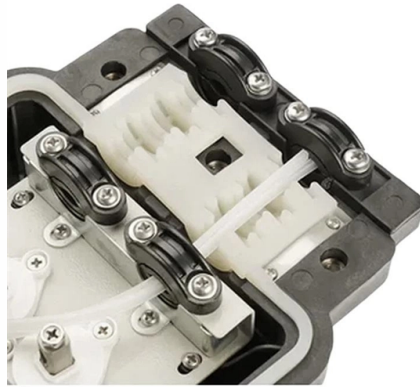


Does a household electrical distribution box need a grounding wire



Overview

Metal electrical boxes such as junction boxes, metal gang boxes, or metal receptacle, light or ceiling fan mounting boxes all need to be connected to the system ground, and of course all 120V and 220V circuit wire electrical splices must be made inside of a. Metal electrical boxes such as junction boxes, metal gang boxes, or metal receptacle, light or ceiling fan mounting boxes all need to be connected to the system ground, and of course all 120V and 220V circuit wire electrical splices must be made inside of a. The ground connection is needed to avoid a person touching a metallic part of faulty equipment to be electrically shocked. So the person acts as the conductor closing the circuit between the high voltage metallic part and the ground (at zero volt by definition). The grounding connection hence. Whether you're a seasoned pro or just starting out, this comprehensive guide will give you practical insights into proper grounding techniques, with a special focus on how selecting quality materials from a reliable building material supplier impacts your entire system's safety and longevity. The correct connection method of Distribution box grounding wire mainly includes the following steps: 1. Confusion often arises when connecting the neutral and ground conductors within a breaker box, as their proper handling depends entirely on the panel's location within the electrical. However, for experienced DIYers, this guide provides a detailed, step-by-step approach to ensuring your circuit breaker box is properly grounded, enhancing electrical safety grounding throughout your home. Without proper grounding, your wiring system is vulnerable to shocks, fires, and other dangerous and costly problems.

Article Content

Understanding Grounding and Bonding: A Practical

Whether you're a homeowner, an electrician, or an engineer, understanding the principles of grounding and bonding can help ensure that electrical systems are

How To Run A Ground Wire To An Electrical Panel Box

Your service panel's ground wire prevents a line fault from becoming a shocking experience. By shunting excess line voltage back to the panel's neutral pole, the ground current

Ground Wire: What Exactly Does a Ground Wire Do?

The ground wire helps protect against shock in case of a fault in the motor or metal housing. If your fan or electrical box lacks a ground wire, installing a ceiling fan becomes riskier and

Electrical Grounding and Earthing

This connection is established using a thick copper conductor wire with very low resistance for safety reasons. Grounding, or earthing, is the process of

The Importance of Ground Wires in the Breaker Box: A

The ground wire in a breaker box is a crucial element of an electrical system, providing safety and preventing electrical shocks. Learn more about its

Is ground connection in home electrical system really

This would make the ground wire in home electric sockets

Essential Grounding and Safety Practices in Residential

The article discusses common residential electric power service, emphasizing the importance of proper grounding and safety measures to prevent electrical

Grounding System Installation Standards for Distribution Boxes and ...

Your distribution box is mission control for electricity in any building. When grounding fails here, it's like having a spaceship without a heat shield—everything inside becomes vulnerable to surges, faults,

Correct Connection Method Of Grounding Wire Of

Grounding of electrical components If there are electrical components in the distribution box that need to be grounded, copper core wires can be used

How To Ground A Circuit Breaker Box Safely: A Step-by

A properly grounded circuit breaker box is a cornerstone of electrical safety grounding. It provides a path for stray electricity to safely dissipate into the

Residential Electrical Service Grounding Requirements

The earth ground ensures the safety of an electrical system—the key components are the grounding rod, grounding wire, and grounding clamp.

How Do You Ground An Electrical Box

When it comes to wiring a home, safely grounding an electrical box is one of the most important steps. Without proper

Electrical Grounding (A Complete Guide) | DFLIQ

Electrical tape is weak and can easily loosen and peel over time, exposing the wire again. For electrical safety, it's crucial to use proper grounding methods like wire

Electrical Box Ground Wire Connectors & Connections

Metal electrical boxes such as junction boxes, metal gang boxes, or metal receptacle, light or ceiling fan mounting boxes all need to be connected to the system ground, and of course all 120V and 220V

Correct Connection Method Of Grounding Wire Of

Generally, copper core wire is selected as the ground wire and connected to the PE wiring bar. When connecting, it is necessary to strip the wire

Electric system ground system inspection

Electrical ground system inspection procedures & checklists. This document discusses procedures the inspection of the grounding system components of a building electrical system when performed by

Why have Electrical Grounding? What is a Ground Wire?

Electrical ground wires are a vital part of every electrical system and their installation, maintenance and continuity should be checked regularly by a professional

How to Ground Electrical Wires

Ground wires must be firmly connected at all points. And if conduit or sheathing is used as a ground path, connections must be tight. If you're not sure

Understanding Electrical Grounding and How It Works

Grounding is a principle of electricity often mentioned in wiring projects but can be confusing to homeowners and DIYers. To understand the

Where Does the Neutral Wire Go in a Breaker Box? -

Where Does the Neutral Wire in Breaker Box Go The neutral or white wire is usually connected to the breaker box's neutral bus bar. At the same time,

The Importance of Ground Wires in the Breaker Box: A

To ensure the effectiveness of the ground wire, it is important to maintain proper grounding throughout the electrical system. This includes ensuring that all

Why Does My Electrical System Need to be Grounded?

You don't have to be an expert to ensure the safety of your home, but you should know the basics. You, your household and all of your electrical

Should a Breaker Box Wire Neutral or Ground?

The installation requires that both the neutral and the equipment grounding conductors are run as separate, insulated wires from the main service panel to the subpanel.

Understanding Electrical Grounding: Safety and Protection

Learn how electrical grounding work, its importance, its components, and proper installation for a safe and reliable electrical system.

A Homeowner's Guide to Electrical System Grounding

Electricians also need wire strippers, pliers, and a voltage tester to safely handle electrical cables. The heart of the grounding system is the ground rod, typically made of copper-clad steel.

how do you ground a plastic electrical box

If there is any damage or cracks in the electrical box, you should repair it first before grounding it. In addition, you also need to check whether the ground

Contact Us

For more information, pricing, or custom solutions, please contact us:

Website: <https://www.blazingfast.co.za>

Email: info@blazingfast.co.za

Phone: +27 83 416 7295

Address: Plot 45, Silicon Savannah Road, Tatu City, Kiambu 00900, Kenya

This document is for informational purposes only. Specifications subject to change without notice.

