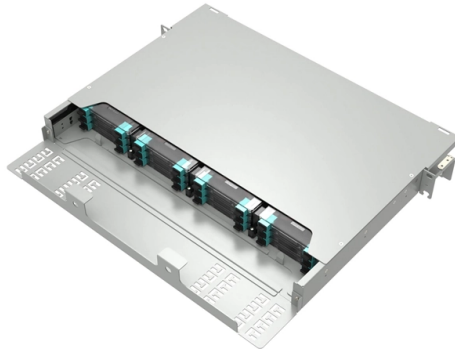


Drilling holes for the main switch in the distribution box



Overview

Bore 3/4-inch holes through the framing members about 8 inches above the boxes. Pro tip: Center the bit on the stud, brace the drill and apply pressure with your thigh for easier drilling of wall studs. Angle the bit into tight spots. Installing floor switch box with Worktool square drilling bit Worktool square drilling bit makes installation faster and more precise The Worktool square drilling bit is designed to create accurate square holes in concrete or brick surfaces, making it ideal for installing electrical switch boxes. While junction boxes offer pre-punched openings, certain installations require creating a precise, new hole for specific cable clamps or fittings. There are several types of electrical panels, including: Breaker panels: These panels use circuit breakers to interrupt electrical flow when a circuit is overloaded or experiences a fault. (most rooms have either an attic above or a. Whether you're renovating a room, adding new outlets, or simply moving an existing one, drilling holes for electrical outlets is a common and necessary task.



Article Content

Correct Selection Of Main Switch Of Distribution Box

As the main switch is separated from the whole distribution box, it can also be used as the power supply terminal (including bus bar) for the protection function of

Breaker Box Wiring | How to Wire a Main Circuit Breaker

Once they are aligned, you can make markings for drilling holes. Step 5: Once you properly mounted the panel, we can begin the breaker box wiring

How to Drill Holes for Electrical Outlets?

Drilling holes for electrical outlets is a fundamental skill for any homeowner or DIY enthusiast. By following the step-by-step guide provided in this article and

How to Cut a Hole in an Electrical Box

A hole saw attached to a standard drill provides a quick and precise method for cutting circular openings. For non-circular or custom openings, a metal nibbler or a rotary tool with a

Drilling Holes in Electrical Control Panels

There are four main ways to drill a push button hole, three of which I recommend. Helping you become a better technician and passing out high fives Not sure wh...

Understanding Distribution Boxes: A Comprehensive Guide

Distribution box What Is a Distribution Box Used For A distribution box is used to receive electrical power from a main supply and distribute it to

Single Phase Distribution Box Definition and Main Parts

A single phase distribution box controls and protects home or office circuits. Learn its definition, main parts, and how it ensures electrical safety.

Step-by-Step Guide to Wiring a 3 Phase DB Box

Learn about the wiring process for a 3 phase distribution board (DB) box, including the necessary steps and safety precautions. Understand how to connect the

How To Determine The Perfect Size Hole To Drill For

Learn how to determine the perfect size hole to drill for electric installations with our comprehensive guide. Find out the tools and techniques needed to ensure a

Understanding Circuit Breaker Wiring Configurations in

Correct wiring methods for circuit breakers within distribution boxes are fundamental to ensuring electrical safety and compliance with established codes.

How to Rough-In Electrical Wiring (DIY) | Family Handyman

We'll show you rough-in basics like how to position outlet and switch boxes and run the electrical cable between them, but we

Wiring Best Practices: A Guide to Distribution Boards

1. What Is a Distribution Board? A distribution board (commonly known as a fuse box or circuit breaker panel) is the nerve centre of your electrical system. It receives

Best practices for Switch box/junction

It is not uncommon in industry to find a junction box or switch box enclosure with water seeping in, especially when an entry or exit is made on the side or top.

Distribution boards components

Distribution boards (generally only one in residential premises) usually include the meter (s) and in some cases (notably where the supply utilities impose a TT earthing system and/or tariff

Distribution Boxes Types - The Complete Guide

The power distribution boxes deliver electricity from the main electrical main to other circuits. Several distribution boxes are designed for specific use in

SAFEHOUSE GUIDE TO DISTRIBUTION BOARDS,

SAFEHOUSE GUIDE TO DISTRIBUTION BOARDS, ISOLATORS AND EARTH LEAKAGE UNITS The distribution board in any building contains

Distribution Board Wiring Diagram For Single Phase Wiring

When we start a project of electrical wiring the first and main control point of wiring is the distribution board. Distribution board wiring is very important

What hand and power tools are used to install a

Power tools are heavily used to install distribution box units, with drills and impact drivers being especially common. Hole saws are frequently used as well. The

Rough-In Electrical

-Be sure to account for trim around the doors when you rough-in electrical boxes if you plan to put a light switch just inside the door such as in a bathroom. You can

How to Install a Distribution Box—A Comprehensive

Before starting the installation, finding a proper place for putting the distribution box is crucial, because it largely decides the safety and convenience

How to determine the size, installation method and

When the switches are arranged in two rows, the wiring of the switches should be considered. Of course, there is no final conclusion on the size of the electric box.

Wiring of the Distribution Board From Energy Meter to

How to Wire a Distribution Board? Distribution Board also known as "Panel Board", "Switch & Fuse Board" or "Consumer Unit" is a box installed in the building

Can You Drill Hole in Electrical Panel? - Complete Guide

Drilling holes in electrical panels can be a necessary and critical part of electrical work, but it requires strict safety precautions and attention to local regulations and codes.

Distribution Box: Types and Functions | Axis-Electricals

A distribution box ensures that electrical supply is distributed in the building, also known as a distribution board, panel board, breaker panel, or electric panel.

Installing floor switch box with Worktool square drilling bit

It reduces errors and material wastage, ensures a snug fit for switch boxes, and enhances the safety and reliability of electrical installations.

Distribution Box Guide: Types, Components & Solutions

Understand distribution boxes (DB boxes) in 5 minutes. Learn about types, components, functions, and uses. Find the perfect DB box for your needs.

Contact Us

For more information, pricing, or custom solutions, please contact us:

Website: <https://www.blazingfast.co.za>

Email: info@blazingfast.co.za

Phone: +27 83 416 7295

Address: Plot 45, Silicon Savannah Road, Tatu City, Kiambu 00900, Kenya

This document is for informational purposes only. Specifications subject to change without notice.

