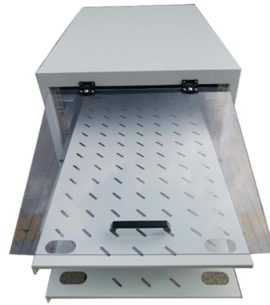


Home electrical distribution box should have a ground wire



Overview

Metal electrical boxes such as junction boxes, metal gang boxes, or metal receptacle, light or ceiling fan mounting boxes all need to be connected to the system ground, and of course all 120V and 220V circuit wire electrical splices must be made inside of a. Metal electrical boxes such as junction boxes, metal gang boxes, or metal receptacle, light or ceiling fan mounting boxes all need to be connected to the system ground, and of course all 120V and 220V circuit wire electrical splices must be made inside of a. Whether you're a seasoned pro or just starting out, this comprehensive guide will give you practical insights into proper grounding techniques, with a special focus on how selecting quality materials from a reliable building material supplier impacts your entire system's safety and longevity. Confusion often arises when connecting the neutral and ground conductors within a breaker box, as their proper handling depends entirely on the panel's location within the electrical system. These two conductors serve fundamentally different safety functions, even though they may sometimes connect. The correct connection method of Distribution box grounding wire mainly includes the following steps: 1. Ground faults occur when a hot wire touches a ground wire or metal box, creating a dangerous surge that trips. The ground wire is intended to be a low-impedance path to ground, to safely carry the current of a ground fault until the circuit breaker trips. In this case, you would become part of the circuit. Choose the right box based on environment (indoor/outdoor), load capacity, and durability. Check for proper IP/NEMA ratings and material quality. Ensure safe placement: install in dry, accessible areas with good ventilation and at appropriate height (typically ~1. Practice good wiring: secure.

Article Content

Grounding Basics

Ground wires bond all electrical devices and potentially current-carrying metal surfaces. This bonding creates a path with such low impedance (resistance) that

What Happens When a Fuse Blows and How to Fix It

Ground faults: A ground fault is a short circuit where the electrical current flows directly to the earth (also known as the ground) or a grounded part

The Complete Guide to Distribution Box: Installation, Types & More

Blog The Complete Guide to Distribution Box: Installation, Types & More By Admin Aug 2, 2025 No Comments # distribution box Introduction Electrical systems power our homes, offices, and

The installation requirements for the distribution box

Grounding keeps everyone safe by directing any stray electricity safely into the ground. Without proper grounding, there's a risk of electric shock

How to Ground Electrical Wires

Most of your home's receptacles should be grounded. If they're not, learn four different ways to add this safety feature. If you have an older home, it's

Can Neutral And Ground Wires Be On The Same Bus Bar?

Many homeowners get confused about their electrical system when talking about neutrals and grounds. This confusion can lead to questions about

Correct Connection Method Of Grounding Wire Of

Generally, copper core wire is selected as the ground wire and connected to the PE wiring bar. When connecting, it is necessary to strip the wire

How to Ground a Wire Depending On Your Outlet Setup

Savvy homeowners might choose to add surge protection to their existing electrical system. Here's a guide to help you ground wires in your home.

Why have Electrical Grounding? What is a Ground Wire?

Electrical ground wires are a vital part of every electrical system and their installation, maintenance and continuity should be checked regularly by a professional

Neutral Vs Ground Wire: What That White Wire Is

I have always had the most difficult time understanding why I need both a neutral and ground wire when they ultimately both connect to the same bar in a breaker

How do you ground a plastic electrical box

If there is any damage or cracks in the electrical box, you should repair it first before grounding it. In addition, you also need to check whether the

Should a Breaker Box Wire Neutral or Ground?

Master the fundamental safety difference between neutral and ground wires and the strict rules governing where they must connect or separate.

Breaker Box Wiring: Which Wires Are Neutral and

Check your electrical panel for proper wire connections, ensuring

How To Ground A Circuit Breaker Box Safely: A Step-by

However, for experienced DIYers, this guide provides a detailed, step-by-step approach to ensuring your circuit breaker box is properly grounded,

Grounding System Installation Standards for Distribution Boxes and ...

Hey there! If you're working with electrical systems, you know that grounding isn't just some bureaucratic requirement—it's literally the difference between a safe, functional system and a potential disaster.

Grounding System Installation Standards for Distribution Boxes and ...

Whether you're a seasoned pro or just starting out, this comprehensive guide will give you practical insights into proper grounding techniques, with a special focus on how selecting quality materials

Ground Wire: What Exactly Does a Ground Wire Do?

How to Add a Ground Wire to an Outlet Adding a ground wire to an outlet is a potentially hazardous task and should be done by a trained electrician. It typically involves: Running a new

The Importance of Ground Wires in the Breaker Box: A

The ground wire in a breaker box is a crucial element of an electrical system, providing safety and preventing electrical shocks. Learn more about its

Understanding What a Ground Wire is and Why it

Understanding What a Ground Wire is and Why it Matters Knowing and understanding what a ground wire is and why it matters is incredibly important.

JLC Field Guide: Grounding

JLC Field Guide: Grounding The purpose of grounding is safety: A ground wire generates a short circuit and trips the circuit breaker or fuse when electrical

I have two questions: Do I attach all my Common and Grounds to the copper wire from the pole? The box itself isn't connected to the ground

What Happens When a Fuse Blows and How to Fix It

To understand a blown fuse, you first need to have a grasp on the purpose fuses serve in your electrical box.

Grounding Basics

Ground wires (equipment grounding conductors) connect to every part of the electrical system that could possibly become energized—metal boxes,

Do I ground to box or back of outlet?

Electrical - AC & DC - Do I ground to box or back of outlet? - I just moved an outlet in my house by installing an extension box on the original box and then using EMT conduit to run wires

Electrical Box Ground Wire Connectors & Connections

How to make proper & safe electrical ground wiring connections in the box: This article describes options for connecting a metal electrical box to the grounding conductor & connecting the grounding

Contact Us

For more information, pricing, or custom solutions, please contact us:

Website: <https://www.blazingfast.co.za>

Email: info@blazingfast.co.za

Phone: +27 83 416 7295

Address: Plot 45, Silicon Savannah Road, Tatu City, Kiambu 00900, Kenya

This document is for informational purposes only. Specifications subject to change without notice.

