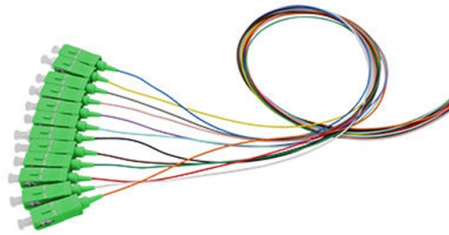


Mdf fiber optic main distribution frame



Overview

In telecommunications, a distribution frame is a passive device which terminates cables, allowing arbitrary interconnections to be made. For example, the main distribution frame (MDF) located at a telephone central office terminates the cables leading to subscribers on the one hand, and cables leading to active equipment (such as DSLAMs and telephone switches) on the other. Service is. Types Distribution frames for specific types of signals often have specific initialisms: • DDF – distribution frame • IDF – • MDF –. Distribution frames may grow to extremely large sizes. In major installations, audio distribution frames can have as many as 10,000 incoming and outgoing separate copper wires (signals require tw. • - Table used to physically connect phone lines • - Device featuring a number of jacks for connecting and routing circuits •.



Article Content

What is a Main Distribution Frame (MDF)? Understanding the Core of ...

A Main Distribution Frame (MDF) is a signal distribution frame in a central office or customer premises that connects external telecommunications lines to internal lines through a series

What Is a Main Distribution Frame (MDF)? Everything You Need to

An MDF is the central hub of your building's network, crucial for connectivity and scalability. Learn its components, roles, and best practices.

Main Distribution Frames

- A Main Distribution Frame (MDF) is the interface between The subscriber cables coming from the local network (line side)

Understanding Distribution Frames in Network

This article explores the concept of distribution frames in network infrastructure, detailing the roles of Main Distribution Frames (MDF) and

Structured Cabling Standards in MDF Design (TIA,

That's why, at Newport Network Solutions, Inc., we follow the industry's top guidelines—including TIA, ANSI, and NEC standards—especially when designing

ODF Explained: Types, Architecture, Management

A complete engineering guide to Optical Distribution Frames (ODF): types, components, fiber capacity planning, MPO/MTP compatibility, protection

Basic of Optical Distribution Frame (ODF)

An optical distribution frame (ODF) is a frame used to provide cable interconnections between communication facilities, which can integrate fiber

MDF vs. IDF in Networking

The main distribution frame (MDF) is a communication point connecting the internal network to the external network. As a major hub in the

IDF and MDF definitions

IDF usually connects to MDF via fiber optic cables for greater length and faster speeds. at workplace, IDF is a smaller room with fewer devices (usually switches) or IDF can be a rack mounted (lifted) on

What Is a Main Distribution Frame (MDF)? | Data Center Glossary ...

A main distribution frame (MDF) is the primary hub or demarcation point that interconnects private or public IT and telecommunication lines coming into a building to an internal network via any number of

MDF vs IDF: Key Differences Explained

Business decision-makers evaluating network infrastructure must understand the key differences between Main Distribution Frame (MDF) and

Main distribution frame

Cables to intermediate distribution frames (IDF) terminate at the MDF. Trunk cables may terminate on the same MDF or on a separate trunk main distribution frame

MDF Room: Complete Guide to Main Distribution Frame

The MDF room (Main Distribution Frame room) is pivotal in organizing and managing network connections within various facilities. This comprehensive

MDF vs IDF: Key Differences Explained

The Main Distribution Frame (MDF) serves as the network's central command center, primarily responsible for connecting your organization's internal

MDF vs IDF – Major Differences with Examples

When exploring the landscape of networking infrastructure, two terms often encountered are Main Distribution Frame (MDF) and Intermediate

What is a Main Distribution Frame (MDF)? – TURNSTONE CABLES

Read the article that explains what a main distribution frame is, its features, uses, and how it connects telecom and data systems in buildings, offices, and data centers.

MDF vs IDF: Everything You Need To Know

Home Mdf Vs Idf Everything You Need To Know MDF vs IDF: Everything You Need To Know If the topic is “network infrastructure,” understanding the key differences

Understanding MDF vs. IDF Cabling In Data Networking

The Main Distribution Frame (MDF) serves as the heart of a network infrastructure. It acts as a centralized point where incoming data lines from internet service providers or external networks

What is a Main Distribution Frame (MDF)?

What Does Main Distribution Frame Mean? A Main Distribution Frame (MDF) is a signal distribution frame or cable rack used in telephony to interconnect and manage telecommunication

What Is a Main Distribution Frame (MDF)? Difference from ODF

Main Distribution Frame (MDF): Deploying these things can seem scary, but getting your head around Main Distribution Frame MDF is vital for new optical networks.

Main Distribution Frame

Those racks are the heart of physical connectivity—the Main Distribution Frame, or MDF. It may not look impressive at first glance, but it's the

What Is a Main Distribution Frame (MDF) Room?

Learn all about Main Distribution Frame (MDF) Rooms, their purpose, components, and importance in telecommunications infrastructure.

MDF vs. IDF: Key differences in networking

Scope marks the difference when it comes to MDF vs. IDF (Main Distribution Frame vs. Intermediate Distribution Frame) setups. One anchors the network. The other extends it. Together,

The Role of MDF and IDF in Structured Cabling Systems

The structured cabling systems have two key components that are Main Distribution Frame (MDF) and Intermediate Distribution Frame (IDF). The

Optical Distribution Frame (ODF): The Complete Guide for Fiber

Comprehensive guide to Optical Distribution Frames (ODF) for data centers. Learn ODF types, installation best practices, fiber management, patch panels, MPO/MTP solutions, and high

What Is a Main Distribution Frame (MDF)? Difference

High-quality Main Distribution Frame MDF solutions for operators. Improve patch-cord management, reduce congestion, scale networks with trusted

MDF vs IDF: Key Differences Explained with Real

When exploring the landscape of networking infrastructure, two terms often encountered are Main Distribution Frame (MDF) and Intermediate

Distribution Frame Guide

For a reliable, efficient, and versatile solution for your telecommunications and network management needs, choose our distribution

Main Distribution Frame (MDF) and Optical Distribution Frame (ODF)

Browse our catalog of products grouped in the Main Distribution Frame (MDF) and Optical Distribution Frame (ODF) category. High quality and performance products!

Contact Us

For more information, pricing, or custom solutions, please contact us:

Website: <https://www.blazingfast.co.za>

Email: info@blazingfast.co.za

Phone: +27 83 416 7295

Address: Plot 45, Silicon Savannah Road, Tatu City, Kiambu 00900, Kenya

This document is for informational purposes only. Specifications subject to change without notice.

