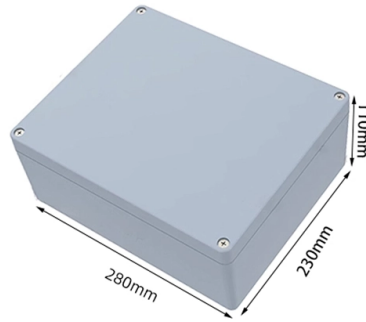


The manual switch in the distribution box cannot be started



Overview

To initialize the switch do the following: Connect the host PC to the console (RJ-45) port of the switch system using the supplied cable. A network switch failure can disrupt business operations by causing connectivity issues, packet loss, and downtime for connected devices. Whether using a managed or unmanaged switch, diagnosing and fixing switch failures requires a structured approach. This guide will help you troubleshoot and. This document describes how to troubleshoot hardware and other issues on Cisco Catalyst 4500/4000 switches with Supervisor Engine. Failure to observe the instructions or precautions in the user manual can result in electrical shock, serious injury, or death, or can damage the distribution box, potentially rendering it. The procedures described in this page assume that you have already installed and powered on your switch according to the instructions in the Hardware Installation Guide, which was shipped with the product. Due to California Senate Bill No. 327, starting from software version 3. Applies to: GSM7212, GSM7224, GSM7224R, GSM7248R, GSM7324*, GSM7328Sv1*, GSM7352Sv1*, GSM7328FS* *This article do not apply to GSM7328S-200 and GSM7352S-200. For other GSM73xx. Thank you very much for choosing Delta TAP-CN01/02/03 distribution box.

Article Content

Setting up a Mikrotik 10 Gbps Switch the first time

Since I've done this four times now... and each time it's just a session of reading the docs, searching the forums, etc. until I get everything configured just so, I thought I'd document how I bring

The specified WSL distribution cannot be reached via the WSL virtual switch

As far as I know, you are the only person experiencing this. Have you rebooted since the original issue? I think the WSL switch gets re-initialized every time you start the first WSL instance

Catalyst 3560 Switch Getting Started Guide

Getting Started Guide Catalyst 3560 Switch Getting Started Guide 1 About this Guide This guide provides instructions on how to use Express Setup to

POWER DISTRIBUTION BOX ASSEMBLY GUIDE

Thank you for purchasing the Powersafe Power Distribution Box Phase 3's Powersafe Sequential Mating Box controls the connection sequence of incoming / outgoing high current cable connections. The

Troubleshoot Hardware Issues on Catalyst 4500/4000 Switches

This document describes how to troubleshoot hardware and other issues on Cisco Catalyst 4500/4000 switches with Supervisor Engine.

Liebert® RXV Remote Distribution Cabinet User Manual

For manual-restart units, verify that the main input circuit breaker trips open. For auto-restart units, verify that the main input circuit breaker does not trip open.

Getting Started Guide

If you are encountering problems setting up your network, please refer to the user manual that came with the switch. It contains many more rules, charts, explanations, and examples to help you get your

Legrand 032680 Area distribution box switch Installation and ...

Comprehensive guide for installing and configuring the Area distribution box switch 032680, a 6 Port fully managed PoE+ switch with battery backup. Learn about features, remote management, and

Getting Started

Due to California Senate Bill No. 327, starting from software version 3.8.2000, Admin and Monitor passwords will need to be typed in manually—no automatic passwords will be created by default.

What to do when my managed switch does not boot

Step 5: Power on the switch and enter the menu Power on the switch. When the console message display the two menu options (1. Start operational code. 2. Start Boot Menu), enter "2" to

Create a branch named "dev/<feature_name>" for this work. If files are ...

When a user starts Codex and signs in with ChatGPT on a Business or Enterprise plan, Codex applies managed requirements on a best-effort basis. Codex first checks for a valid, unexpired local

Delta Electronics Distribution Box TAP-CN01/02/03

Switch off the power before wiring. This instruction only provides introductory information on electrical specifications, functions, wiring, trouble-shooting and

Size determination, installation method and wiring mode

The distribution box is the central hub of the home circuit and the general control of our daily power consumption. It is an indispensable electrical equipment. If there

How to install a manual transfer switch for a backup

Manual transfer switch installation A manual transfer switch is installed next to the main service panel to override the normal electrical service with power

Distribution Box Installation: A Complete Guide to Safe

The distribution box, often referred to as a breaker box, fuse box, or electrical panel, is a critical component of any electrical system. It acts as the central hub for

PMS1280 Distribution Box

Before Getting Started The user manual provides important operation and maintenance instructions for Renogy PMS1280 Smart Distribution Box (hereinafter referred to as distribution box). Read the user

Fix Network Switch Failure: Step-by-Step Guide

Whether using a managed or unmanaged switch, diagnosing and fixing switch failures requires a structured approach. This guide will help you troubleshoot and

Power Xpert FMX

605.4016 G01 01 5 1. GENERAL 1.1 Introduction The user must have authority to perform switching operations, which means being qualified in accordance with locally applicable guidelines,

Dahuasecurity

Hier sollte eine Beschreibung angezeigt werden, diese Seite lässt dies jedoch nicht zu.

8 Steps to Configure Your Network Switch

Learn how to setup a network switch with ease. Switches allow you to send and receive information efficiently and securely. Get setup today!

Distribution Box Guide: Types, Components & Solutions

Understand distribution boxes (DB boxes) in 5 minutes. Learn about types, components, functions, and uses. Find the perfect DB box for your needs.

Distribution Board Design: Standards, Surge Protection

Integrating Surge Protection (SPD) for Safety & Reliability Surge protection is a critical layer of safety in any Distribution Board Design. A properly

What to do when my managed switch does not boot

Connect a computer to the console port of the switch. If the computer has a serial port, you can use the console cable shipped with the switch by connecting one end of the console cable to

Network Switch Troubleshooting Guide: Common

A comprehensive switch troubleshooting from the physical layer to the data link layer to the network layer to find out why your network switch is not

PMS1280 Distribution Box

The distribution box can only be connected to deep-cycle gel-sealed lead-acid batteries (GEL), flooded lead-acid batteries (FLD), sealed lead-acid batteries (AGM) or lithium iron phosphate batteries (LI).

The installation requirements for the distribution box

Learn how to install a distribution box safely and correctly. Covers wiring, placement, standards, and expert tips for a compliant setup.

Getting Started with the Power Distribution Hub

Getting Started with the Power Distribution Hub Welcome to your new Power Distribution Hub from REV Robotics! This documentation is intended to answer

Understanding Distribution Boxes: Your Guide to Power

Weatherproof Distribution Boxes These serve specific outdoor purposes, with rain, dust, and extreme temperatures sealed shut, protecting any

Mennekes Portable Power Distribution Box Operating Manual

View and Download Mennekes Portable Power Distribution Box operating manual online. 16A / 32A / 63A / 125A. Portable Power Distribution Box power distribution unit pdf manual download.

unsupervised_topic_modeling/topics/en/17/100/100/topics at ...

Contribute to annontopicmodel/unsupervised_topic_modeling development by creating an account on GitHub.

Contact Us

For more information, pricing, or custom solutions, please contact us:

Website: <https://www.blazingfast.co.za>

Email: info@blazingfast.co.za

Phone: +27 83 416 7295

Address: Plot 45, Silicon Savannah Road, Tatu City, Kiambu 00900, Kenya

This document is for informational purposes only. Specifications subject to change without notice.

