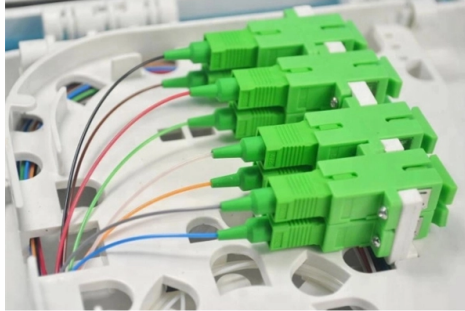


What are embedded parts in cable trays



Overview

The main components of a cable tray system include tray sections, fittings, supports, and accessories. The mechanical and electrical characteristics, tests, certifications, overall quality management, recommendations mentioned in this technical guide only apply to our own cable management ranges and cannot under any circumstances be transposed to si osure, overheating or. B manufactures its cable tray in a range of materials with a variety of finishes. The selection of material and finish is a function of the environment in wh tant in a wide range of environments, and easily formable (Appendices II and III). The cable support lengths and fittings can basically be designed as cable trays, cable ladders or mesh cable trays, in which. An embedded cable tray plays a crucial role in modern electrical systems by providing a concealed and efficient solution for managing cables within walls, floors, and ceilings.



Article Content

Cable Trays and Accesories

Cable Trays are designed to meet most requirements of cable and electrical wire installations and comply to local and international standards of fabrications and

The Ultimate Guide to Tray Cables: Types, Applications and

When it comes to powering, automating and protecting facilities—from factories and petrochemical plants to data centers and high-rises—the right cable makes all the difference. Among

What is Cable Trays in Electrical and Uses

Cable Trays are rigid structural system, comprising of unit or assembly of units/sections and associated fitting for protecting, securely fastening

What are Electrical Cable Trays

Electrical cable trays are a critical component for organizing and supporting cables in various industries. In this extensive exploration, we'll delve

Cable Tray Systems: A Complete Guide to Types

A cable tray system is a unit assembly of sections and fittings that forms a rigid structural system used to securely fasten or support cables and

GUIDE CABLE TRAYS TECHNICAL

Specifies requirements for metal cable trays and associated fittings designed for use in accordance with the rules of Canadian Electrical Code, Part I and the National Electrical Code®

Connecting Cable Trays: Your Guide to Secure and

Learn common methods for connecting cable trays safely and efficiently. Our guide covers splice plates, quick-connects, and key tips for secure

What are Cable Trays? Everything you need to know

Discover everything about cable trays in industrial settings: types, benefits, installation tips, and compliance with NEC and fire resistance standards.

The Role of an Embedded Cable Tray in Concealed Designs

An embedded cable tray plays a crucial role in modern electrical systems by providing a concealed and efficient solution for managing cables within walls, floors, and ceilings. This design not only enhances

Wire Basket Cable Tray Routing System

It provides speed of deployment, structural integrity, cable protection and ease of use to drive business results. The wire basket is up to 20 percent lighter than

The Importance of Cable Tray Components in Electrical

The Role of Cable Tray Components in Electrical Systems Cable tray systems are a fundamental part of modern electrical installations, providing

Cable Tray Systems: Requirements and Best Practices

Comprehensive guide to cable tray systems requirements: tray types, materials, loading, supports, bonding, routing, and best practices for safe electrical cable management.

Cable Tray Technical Guide A practical guide to product selection and ...

Cable tray installed in a hazardous location must contain only those cables that are appropriate for this type of environment as defined in Chapter 5 of the NEC.

The Role of an Embedded Cable Tray in Concealed Designs

An embedded cable tray is a versatile and innovative solution for managing cables within buildings and industrial setups. These systems are specifically designed to be integrated into walls, floors, or

Cable Trays Roles: More Than Just Holding Wires

What are cable trays for? We explain cable trays roles in electrical systems: supporting, protecting, and organising cables

Importance of Cable Trays

Importance of Cable Trays As data demands grow and networks evolve, the physical infrastructure that supports fiber optic systems becomes more critical than ever. Cable trays are a foundational part of

Cable Trays

Cable trays are systems that distribute bundles of insulated electrical cables from power supplies to electrical equipment, consisting of metallic trays supported from structures like walls and ceilings.

Types of Cable Trays – Purpose, Advantages,

Cable tray systems are alternatives to wire ways and electrical conduit, which completely enclose cables. Cable trays are capable of supporting all types of

What is Cable Tray and How it is used in Industrial

What is Cable Tray? In electrical cabling, a cable tray is a metallic structure used to handle insulated electrical power distribution, control, and

Cable Trays and Their Uses: Definition, Types, and

Learn about cable trays for desks, accessories, and how they compare with raceways, conduits, and trunking for efficient cable management.

Types of Cable Trays: Benefits and Uses

Different types of cable trays offer key benefits, optimizing cable management and enhancing efficiency in electrical systems.

Guide to cable support systems

Mounting elements are used to attach or fasten other elements to cable supports and fittings. For example, a mounting plate is often used for junction boxes or device supports. The standard defines

CABLE TRAY SYSTEMS GUIDE

Some applications may require the cable tray to support the weight of a single, dead object in addition to the cable loads. Specifications typically require this to be applied at the midpoint of the span between

What are the main components of a cable tray?

Discover the main components of a cable tray system. Learn about tray types, fittings, supports, and accessories for effective cable management.

Types of Cable Trays: Ladder, Perforated, Basket, Solid

Explore all types of cable trays—ladder, perforated, basket, solid, and channel. Learn their uses, materials, pros, cons, and key differences.

Types of Cable Trays - Purpose, Advantages,

Cable tray is alternatives to wire ways and electrical conduits, which completely enclose cables. Study types of cable trays, purpose, advantages.

Contact Us

For more information, pricing, or custom solutions, please contact us:

Website: <https://www.blazingfast.co.za>

Email: info@blazingfast.co.za

Phone: +27 83 416 7295

Address: Plot 45, Silicon Savannah Road, Tatu City, Kiambu 00900, Kenya

This document is for informational purposes only. Specifications subject to change without notice.

